

SNS Regular Set

Items Needed

Natural Set, E.A. Bond, Gel Base, Sealer Dry, Gel Top, Vitamin Oil, Brush on Glue



Preparation Steps

Always sanitize your customers hands with 100% Alcohol, as well as your own hands, before performing any service.



Step 1

Tip Application on 10 nails with **Brush on Glue with Calcium.**



Step 2

Shape on the side of the nails to even.



Step 3

Sand the entire nail with fine 180 file, or drill machine with fine paper sander on slow speed (#1 speed).



Step 4

Apply **E.A. Bond** on 10 nails and dry well with a paper towel.(On real nail only)

Notice:

1. Always bend the finger 90 degrees before tapping the finger
2. When applying Gel Base, apply the brush laying flat and go from left to right (long strokes), then from right go evenly back to left (before any dipping)

Dipping Powder Steps



Step 1

On the First Finger, apply **Gel Base** across the part of the nail bed that attached to the nail tip. Dip into the **Natural Set** and then tap the excess (After bending the finger 90 degrees).



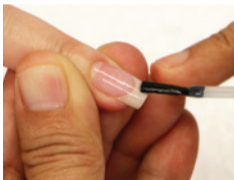
Step 2

Apply **Gel Base** to 1/2 of the nail bed, then dip it in the **Natural Set**. Tap the excess.



Step 3

Apply **Gel Base** to 3/4 of the nail bed, and then dip it into the **Natural Set** and tap the finger.



Step 4

Apply **Gel Base** to the entire nail bed (three

Step 5

Repeat steps 1 through 4 for all 10 nails.

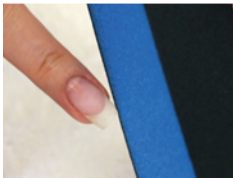


Finishing Steps



Step 1

Shape all 10 nails* (may use the nail machine with fine paper sander around the cuticle and use with slow speed, in case the nail plate is waving).



Step 2

Buff all 10 nails and wash the hands.



Step 3

Apply **Sealer Dry** to all 10 nails, and then wipe them off with a paper towel.



Step 4

Apply the first coat of **Gel Top** quickly and as thin as possible for five nails, and then reapply the second coat in the same way.

Step 5

Wait for 1 to 2 minutes. Apply **Vitamin Oil** and massage the hands to finish.



Notice:

1. Apply Gel Top, quick and very thin or it may cause nail to not dry and the brush get hard.
2. After each client, always sanitize your brush with 100% alcohol and dry well.


SNS Regular Set



Signature Nail Systems
Illinois, USA

1-888-445-2786

www.snsnails.com

Find us on 
snsnailproduct

Techniques were designed by SNS Company & Copy Right.