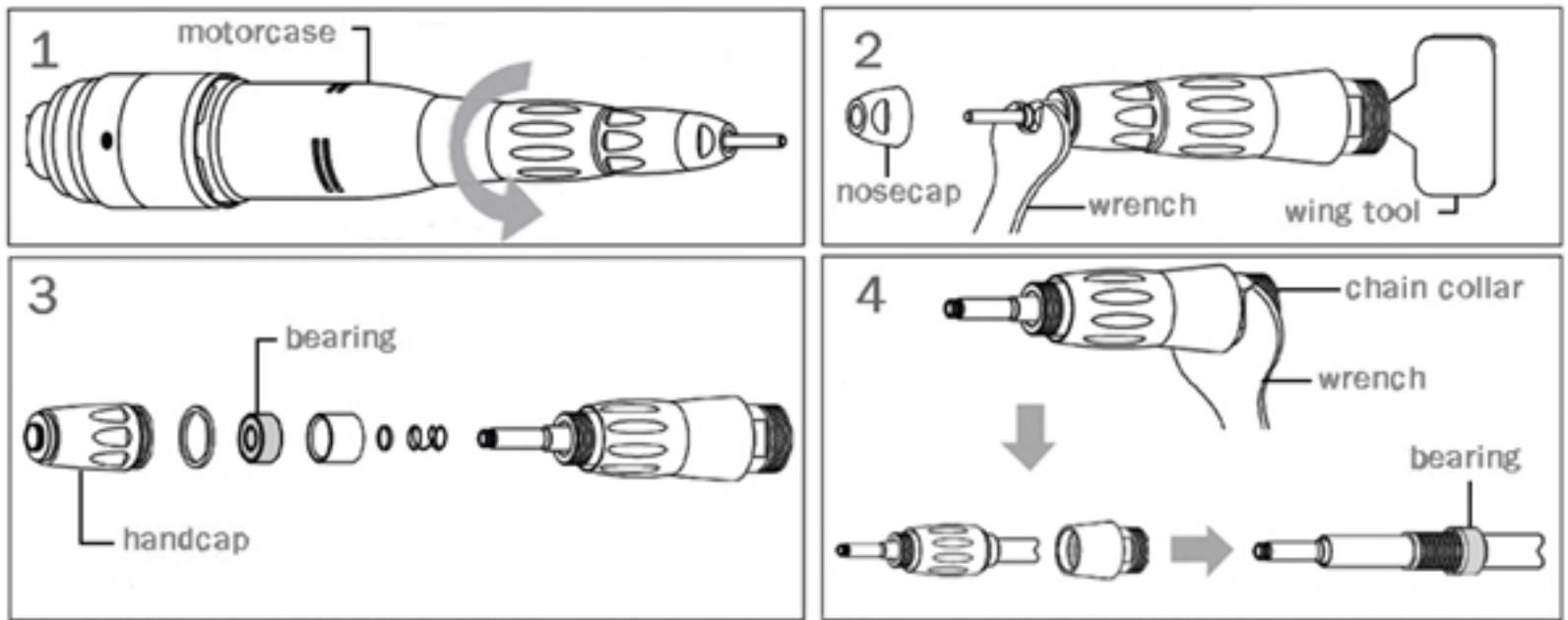
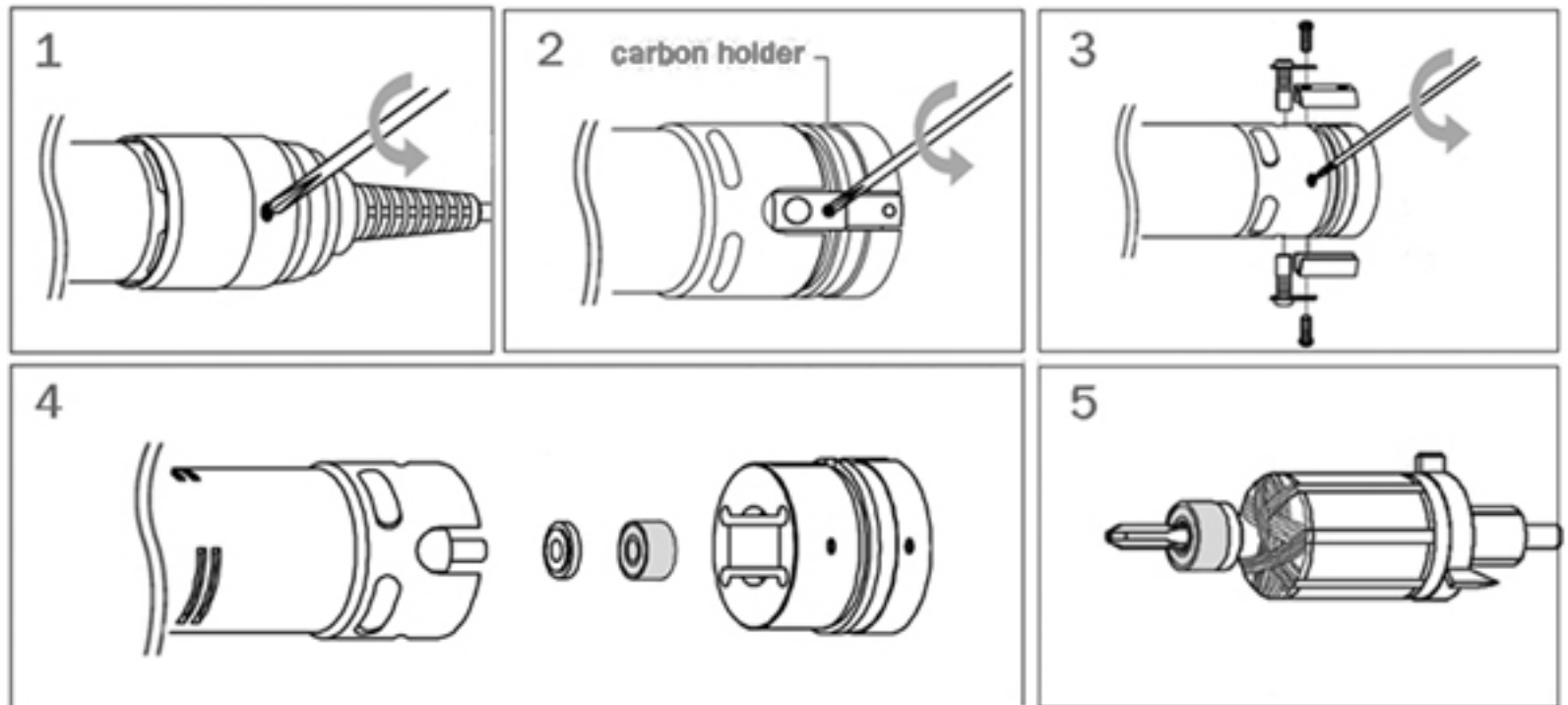


## HOW TO CHANGE BEARING:



1. Hold the motor case and spindle part. Twist them counter-clockwise.
2. Fix the wing tool to coupling. Open the nose cap than open the cap nut with wench.
3. Open the hand cap and change the bearing. Assemble like the illustration.
4. Turn the chain collar with wench. Change the bearing.

## HOW TO CHANGE BEARING ON ARMATURE:



1. Unscrew the bolt on the back cap.
2. Unscrew the bolts on the carbon holder with screwdriver.
3. Unscrew the bolts on the motor case.
4. Pull out the back housing. Change the bearing.
5. Pull out the armature. Change the bearing.